

eGIS Team Updates

February 2023

New Staff (Htoon Chao)

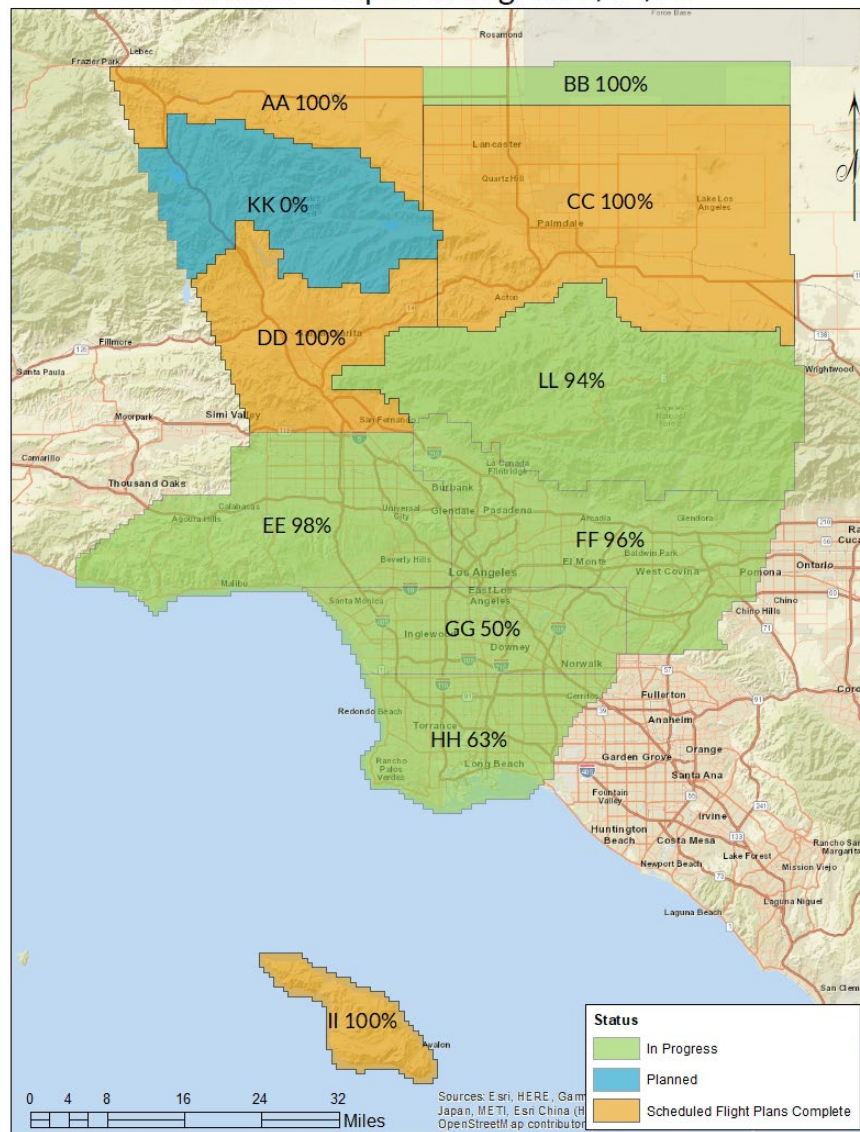
- Worked at DPW for past nine years
- Background:
 - Civil Engineering
 - Environmental
 - Application Developer
 - GIS.....



Imagery capture for LARIAC7 began in early January and our contractor EagleView continues to make steady progress.

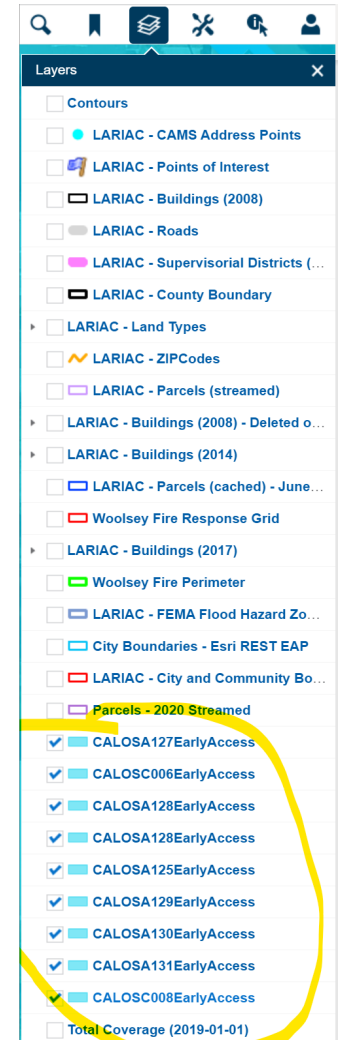
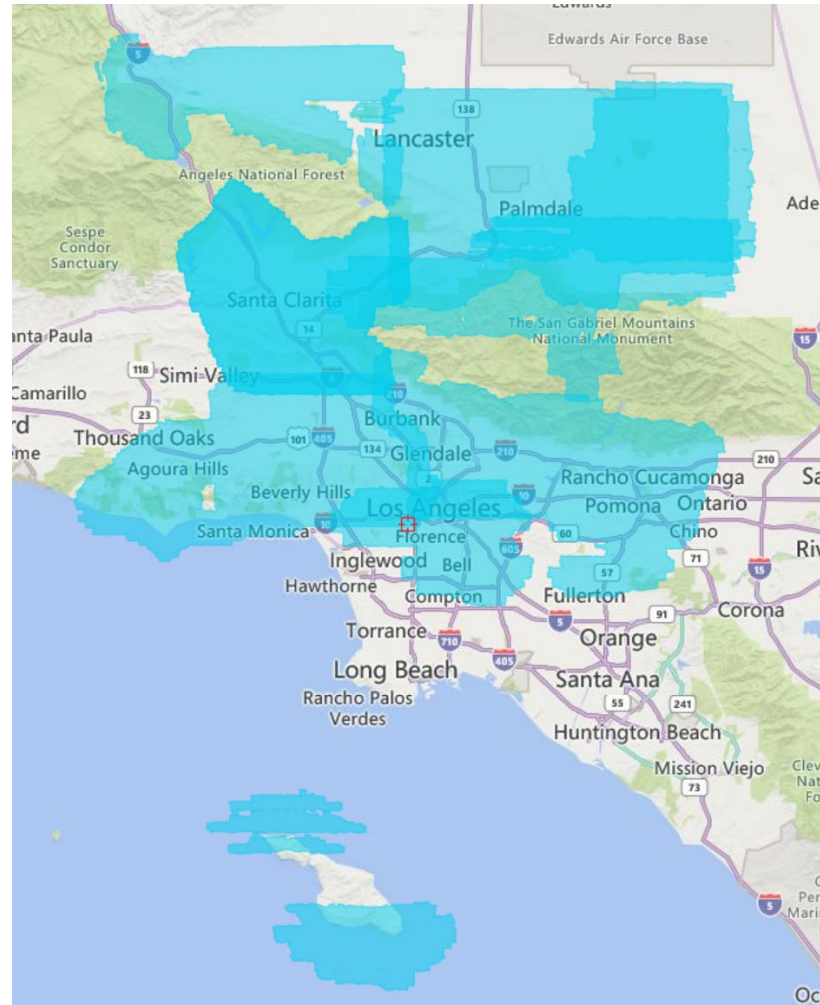
LARIAC (An)

LARIAC7 - Capture Progress 2/14/23



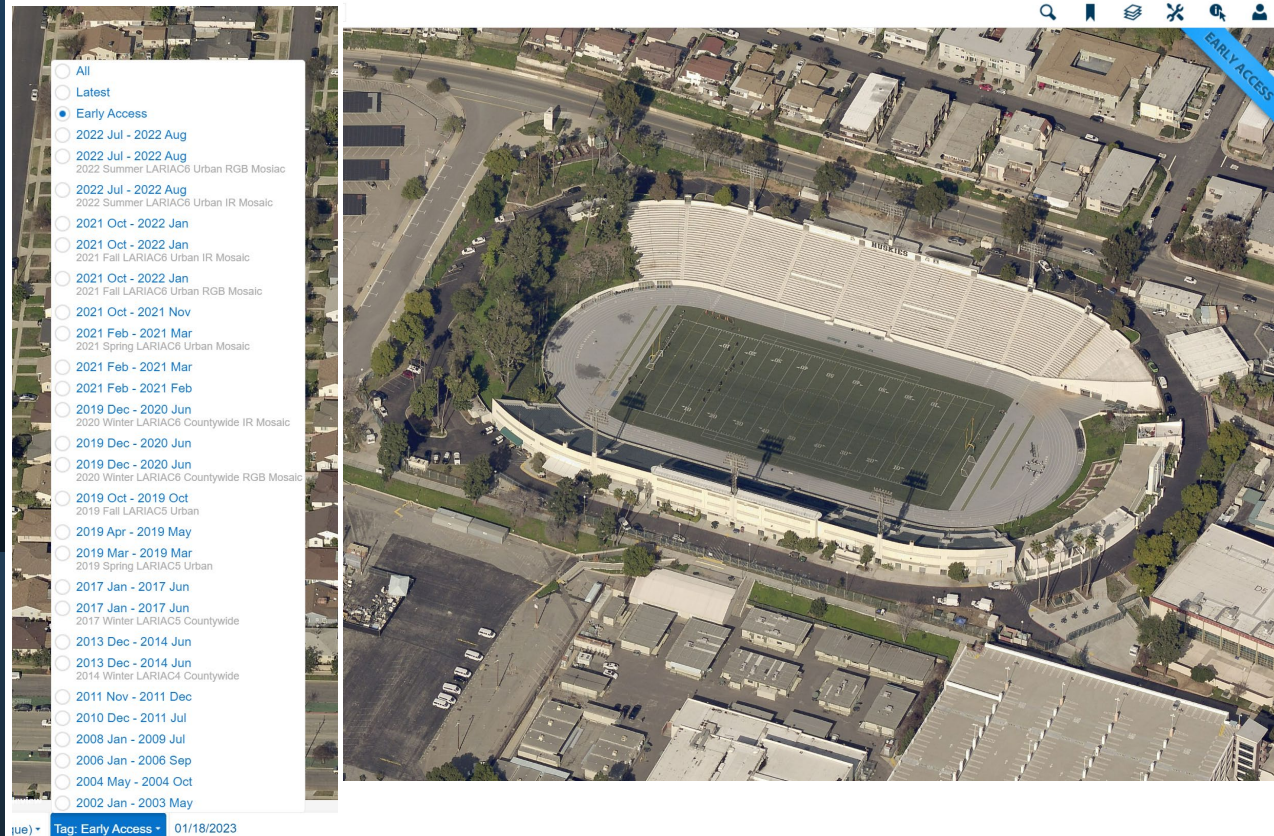
LARIAC (An)

Early Access images are available on [CONNECTExplorer](#). If you log into [CONNECTExplorer](#) you will find the Early Access layer in the Layers list as shown below. This layer shows where Early Access coverages is available. As the project progresses, this coverage will expand



LARIAC (An)

- You can get to the Early Access images with your usual connection to [CONNECTExplorer](#) as a named user. Early Access is one of the choices in the Dates list, and a blue 'Early Access' banner also displays on the top right of the imagery:



- Joint Funding Agreement with USGS for the LiDAR collection.

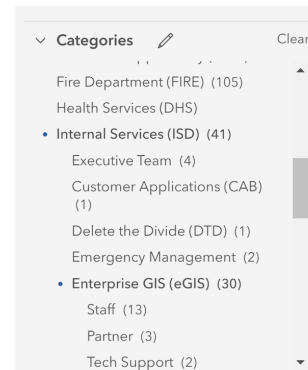
ArcGIS Online (Shannon)

New **AGOL User Group** [schedule](#) began 2/8.

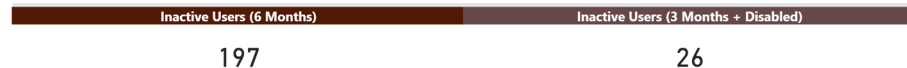
- More in-depth AGOL updates + demos
- Meeting details and files can be found in [Teams](#)

Member Categories are now available. Department admin may configure categories. Recommendation:

- Tier 1 = department responsible for / paying for user
- Tier 2 = user's primary project or division, if needed
- Tier 3 = user's primary role or status, if needed (Staff, Contractor, Election Worker, Administrator, Temporary,...)



Standards Enforcement to occur on March 1, 2023. Please review out-of-compliance users in the [dashboard](#).



ArcGIS Online is **scheduled to update** tomorrow evening 2/22. It is highly recommended that you check your maps and apps to ensure they are working as expected. Please report any release related issues within ArcGIS Online to Technical Support immediately.

Data (Rob)

Repository & AGOL Updates

- City Boundaries schema changes complete: dropped `_NEW_SCHEMA` table
- CSA schema changes complete: added feature type, accounted for Santa Clarita annexation
- Block Groups and Census Tracts shoreline update (more in Demography slide)
- DRP Zoning Data updates and schema changes – [LINK](#)
- Crown Castle AGOL items – [LINK](#)

Looking for data from the new LMS / ServiceLocator database in the repository?

- `eGIS_Infrastructure.EGIS.EGIS_LMS_SERVICE_LOCATOR_DATA` is a flat table view of the ServiceLocator database, updated nightly to sync with updates made in the [LMS admin interface](#) and reflected in [Service Locators](#)
- `EGIS_LMS_POINTS_OF_INTEREST` is coming soon with automated POI data for mapping – categories include schools, parks, named locations... see the full list in this Excel sheet under the “categories” tab: [LMS Data Review 2022.xlsx](#)

GIS Data Committee meeting tomorrow 2/22/2023 @2pm

- Channel meeting in [Teams](#), please add to calendar
- Agenda items include: LMS, schema changes and standards, hosted repository layers, equity data, and more
- Readings on data interoperability and state of GIS tech:
 - [Why Geospatial Data is Stuck in the Year 1955](#)
 - [What you Need to Know](#)

Demography & Census (Victor)

- 2020 Census Tract and Block Group boundary along shoreline/coastal areas to match with updated DPW city boundary and had been updated in the eGIS Repository.
- Provided CEO requested Population Projection on January 1, 2023, by Supervisorial District and City for 2023 Recommended Budget of L.A. County. Data is in eGIS member shared drive “Demography\2022\source”.
- Working on 2023 Census Boundary and Annexation Survey (BAS) to review Census Bureau city boundary against L.A. County city/unincorporated boundary and to create boundary difference polygons including city of Santa Clarita annexation area “Tesoro Del Valle” for the 1st submission deadline on March 1, 2023, to Census Bureau.

<https://www.census.gov/programs-surveys/bas.html>

Infrastructure Status & Updates (Junior)

- SSL certificate renewal for
***.gis.lacounty.gov** domain in March, 2023.

New SSL Cert. will be installed to all eGIS services/application with
***.gis.lacounty.gov** domain.

For example:

- <https://arcgis.gis.lacounty.gov/arcgis/rest/services>
 - <https://cache.gis.lacounty.gov/cache/rest/services>
 - <https://public.gis.lacounty.gov/public/rest/services>
 - <https://assessor.gis.lacounty.gov/assessor/rest/services>
 - <https://dpw.gis.lacounty.gov/dpw/rest/services>
 - <https://apps.gis.lacounty.gov/solar/m/?viewer=solarmap>
 - <https://appcenter.gis.lacounty.gov/ravs/>
- The eGIS team is doing eGIS Infrastructure Health Check with ESRI Professional services and should be finished around the end of March, 2023.

Infrastructure Status & Updates (Junior)

- DPSS ArcGIS Enterprise for Portal has been deployed and ready to use for DPSS GIS team. We also integrated the ArcGIS Enterprise Portal to ISD Azure Active Directory Single Sign On.
- EGIS SDE Geodatabase Upgrade for the eGIS_Environmental and eGIS_Hazards databases have been completed.
- The eGIS team is working on Geocortex applications migration.

CAMS

(Rachel)

- Increased communication with City Jurisdictions.
 - Requests for CAMS Introduction.
 - Aim for April meeting
- The eGIS team is revamping the Locators with ESRI Professional services incorporating improved locator logic & compatibility with Pro 3.0. Project should be finished around the end of March, 2023.